



## **HLS Analyzer User's Guide**

## LEGAL NOTICE

The information in this manual is furnished for informational use only. No part of this manual may be reproduced or transmitted in any form or by any means, electronic or mechanical, for any purpose, without the prior written permission of Jongbel Media Solutions Ltd.

The software described in this manual is owned by Jongbel Media Solutions Ltd. It is protected by Bulgarian Copyright Law as well as by international copyright treaties and may be used or copied only in accordance with the license agreement.

Jongbel Media Solutions Ltd. provides this manual “as is” without any warranty, either express or implied.

This publication may contain typographical errors or technical inaccuracies. While every precaution has been taken in the preparation of this document, Jongbel Media Solutions Ltd. assumes no responsibility for errors or omissions. Nor is any liability assumed for damages resulting from the use of the information contained herein. Changes are periodically made to the information herein; they will be incorporated in new versions of the manual. Please check the Jongbel Media Solutions website regularly for User Manual updates.

Jongbel Media Solutions Ltd. may introduce changes or improvements in the products described in this manual at any time without any special notice.

Please address your comments or questions to:

Jongbel Media Solutions Ltd.

[info@jongbel.com](mailto:info@jongbel.com)

[www.jongbel.com](http://www.jongbel.com)

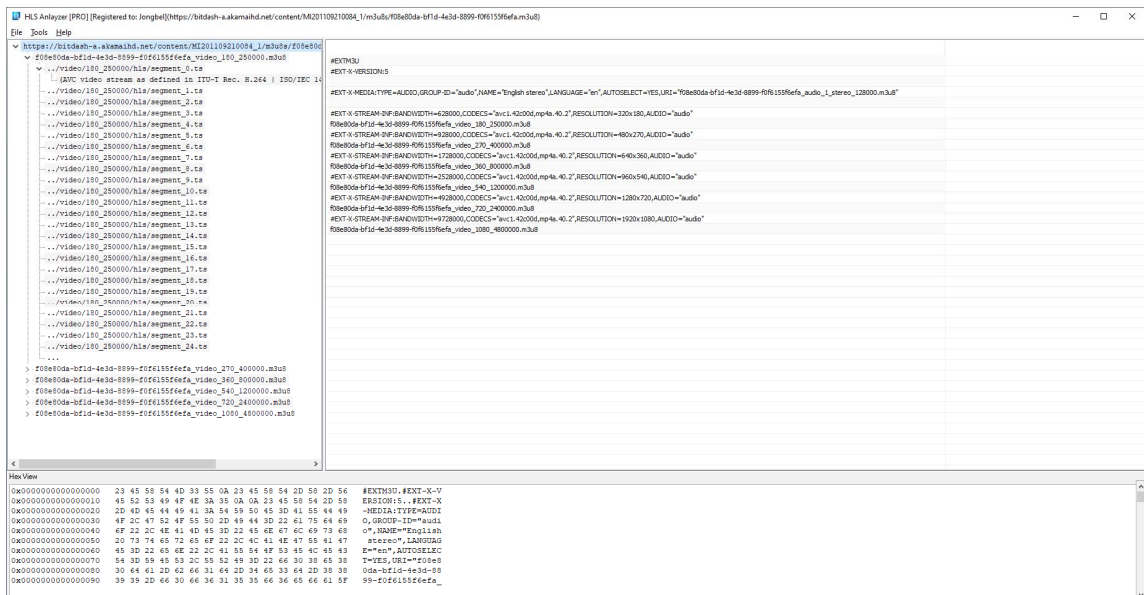
The logo for Jongbel Media Solutions features the word "JONGBEL" in a bold, blue, sans-serif font. The letter "O" is stylized with a yellow and orange circular graphic element. Below "JONGBEL" is the phrase "MEDIA SOLUTIONS" in a smaller, blue, sans-serif font.

## TABLE OF CONTENTS

- 1. Overview ..... 4
- 1.1 General Features ..... 4
- 2. Installation..... 5
- 2.1 Installing HLS Analyzer ..... 5
- 2.2 Uninstalling HLS Analyzer ..... 8
- 3. Functions ..... 8

# 1. Overview

HLS Analyzer application provides a structural representation of the HLS stream. The analyzer exposes the main M3U8 playlist, the sub-playlists of the stream, the container structure and the audio and video essence. Supported are M3U8 playlist, MPEG Transport Stream segments container, fMP4 fragmented container, AVC/H.264 and HEVC/H.265 video essence, AAC and AC3 audio essence. Binary hex representation of all stream elements is also available.



## 1.1 General Features

- Structural representation of HLS stream
- Structural representation of MPEG Transport Stream segments
- Structural representation of fMP4 fragmented segments
- Structural representation of AVC/H.264 video elementary stream
- Structural representation of HEVC/H.265 video elementary stream
- Structural representation of AAC audio elementary stream

- Structural representation of AC3 audio elementary stream
- DRM – FairPlay support
- Hex data representation of all HLS elements

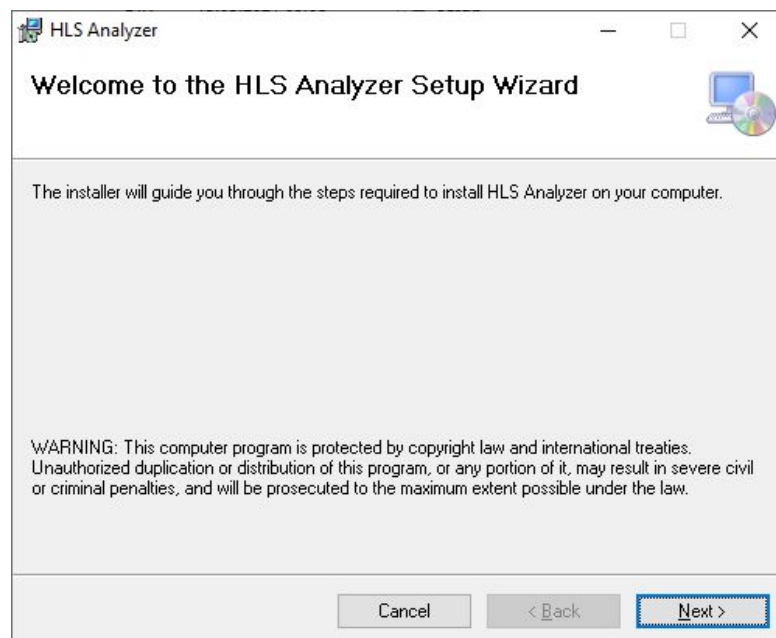
## 2. Installation

### 2.1 Installing HLS Analyzer

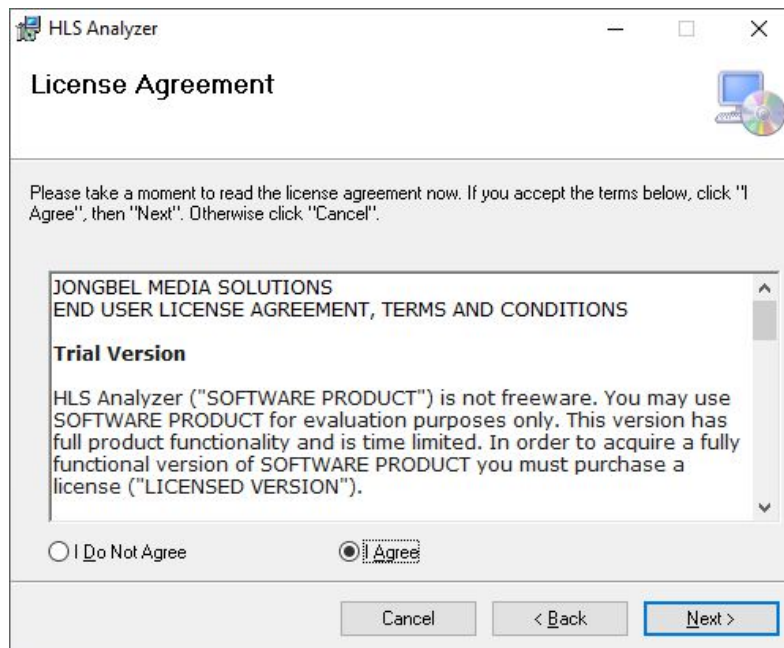
Before installing the **HLS Analyzer** solution, make sure that any previous version of the product has been uninstalled refer 2.2.

The installation package of **HLS Analyzer** is distributed in msi file. After downloading the file from the official Jongbel Media Solutions web site – [www.jongbel.com](http://www.jongbel.com), execute the installation by starting the msi file.

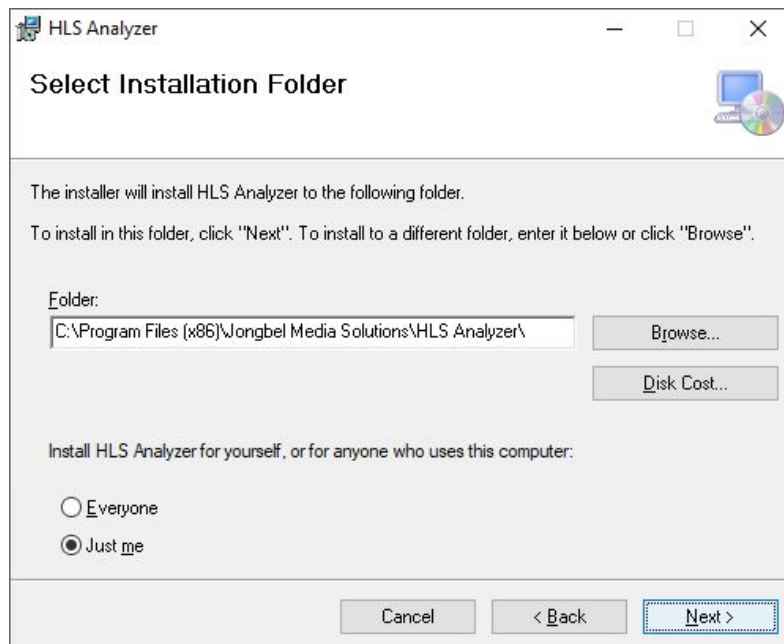
First a Welcome dialog pops up. Click “Next” in order to proceed.



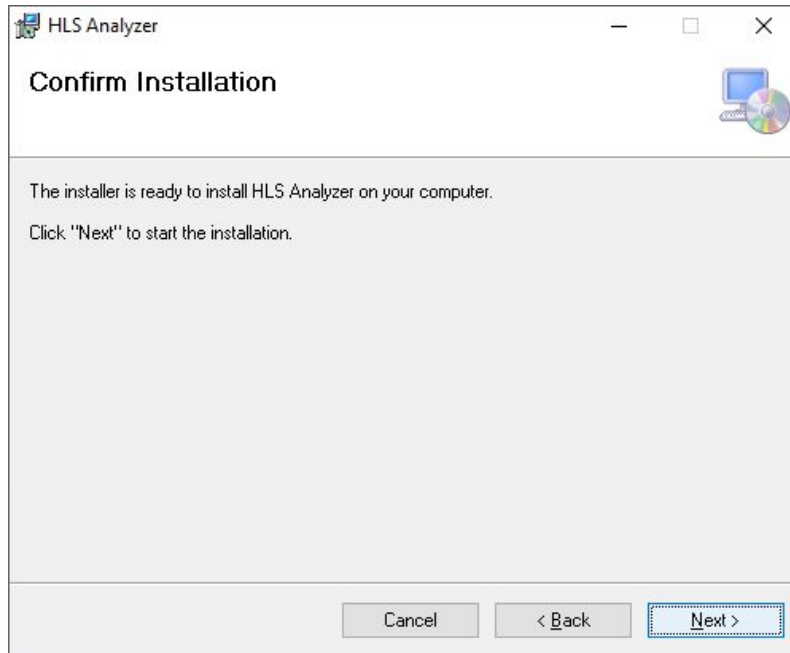
After this a License Agreement dialog pops up. Read the agreement carefully, select “I Agree” if you agree all the terms and click “Next” to proceed.



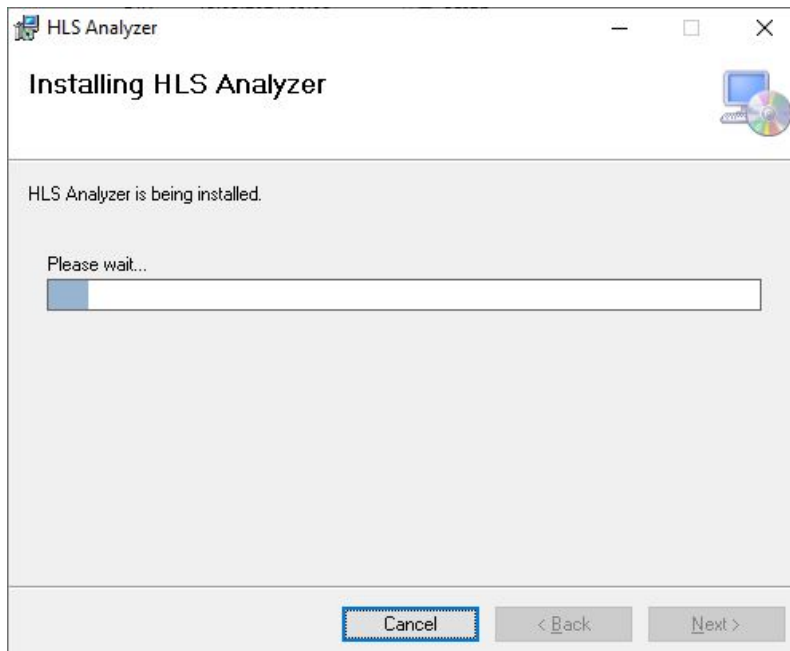
The next window shown specifies the installation product location and user access to the product. Change the destination product folder and user access if needed and click “Next” to proceed.



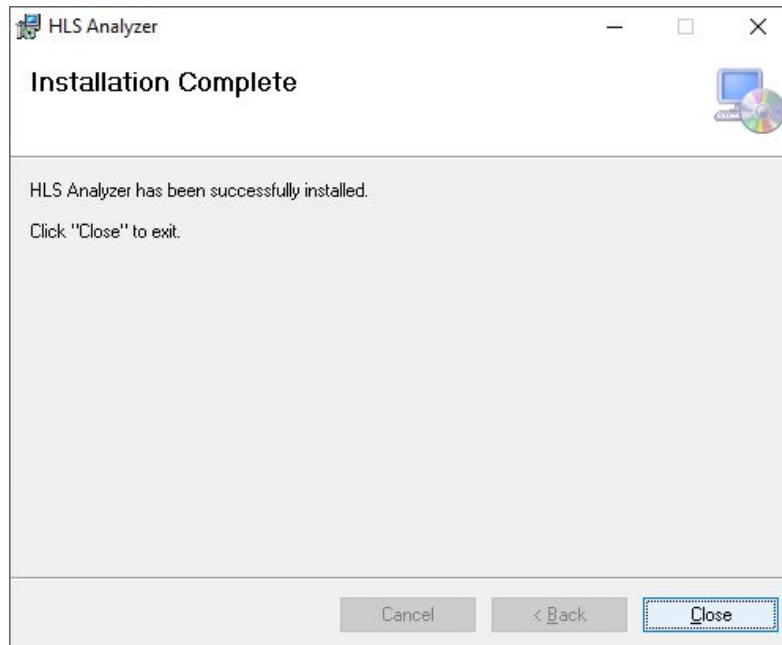
The next dialog is a confirmation dialog. Confirm by clicking “Next” in order to start the installation procedure.



While the product is being installed an “Installing” window shows the installation progress. Wait until the product is being installed.



At the end an “Installation Complete” dialog pops up, which denotes the successful HLS Analyzer installation. Click “Close” to finalize the process.



## 2.2 Uninstalling HLS Analyzer

The application can be removed opening the Control Panel – Programs and Features. Select the **HLS Analyzer** application and click Uninstall.

## 3. Functions

The following functions are available from the application **File** menu.

**Open** – Opens HLS stream from a M3U8 file. The segments stored along the M3U8 playlist must have same folder structure as described in the main playlist and sub-playlists.



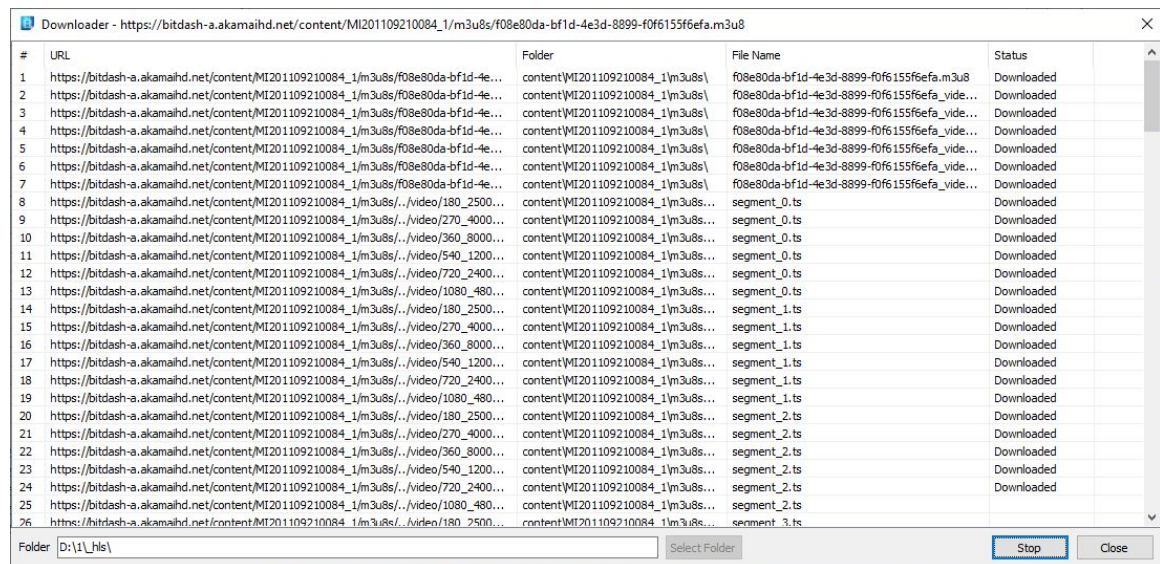
**Load URL** – Loads HLS stream from a URL. The HLS stream can be unprotected or DRM protected.

**Close** – Closes the loaded HLS stream.

**Exit** – Closes the application.

The following functions are available from the application **Tools** menu.

**Downloader** – Opens a Downloader tool.



Downloader - https://bitdash-a.akamaihd.net/content/MI201109210084\_1/m3u8s/f08e80da-bf1d-4e3d-8899-f0f6155f6efa.m3u8

#	URL	Folder	File Name	Status
1	https://bitdash-a.akamaihd.net/content/MI201109210084_1/m3u8s/f08e80da-bf1d-4e...	content\MI201109210084_1\m3u8s\	f08e80da-bf1d-4e3d-8899-f0f6155f6efa.m3u8	Downloaded
2	https://bitdash-a.akamaihd.net/content/MI201109210084_1/m3u8s/f08e80da-bf1d-4e...	content\MI201109210084_1\m3u8s\	f08e80da-bf1d-4e3d-8899-f0f6155f6efa_vid...	Downloaded
3	https://bitdash-a.akamaihd.net/content/MI201109210084_1/m3u8s/f08e80da-bf1d-4e...	content\MI201109210084_1\m3u8s\	f08e80da-bf1d-4e3d-8899-f0f6155f6efa_vid...	Downloaded
4	https://bitdash-a.akamaihd.net/content/MI201109210084_1/m3u8s/f08e80da-bf1d-4e...	content\MI201109210084_1\m3u8s\	f08e80da-bf1d-4e3d-8899-f0f6155f6efa_vid...	Downloaded
5	https://bitdash-a.akamaihd.net/content/MI201109210084_1/m3u8s/f08e80da-bf1d-4e...	content\MI201109210084_1\m3u8s\	f08e80da-bf1d-4e3d-8899-f0f6155f6efa_vid...	Downloaded
6	https://bitdash-a.akamaihd.net/content/MI201109210084_1/m3u8s/f08e80da-bf1d-4e...	content\MI201109210084_1\m3u8s\	f08e80da-bf1d-4e3d-8899-f0f6155f6efa_vid...	Downloaded
7	https://bitdash-a.akamaihd.net/content/MI201109210084_1/m3u8s/f08e80da-bf1d-4e...	content\MI201109210084_1\m3u8s\	f08e80da-bf1d-4e3d-8899-f0f6155f6efa_vid...	Downloaded
8	https://bitdash-a.akamaihd.net/content/MI201109210084_1/m3u8s/./video/180_2500...	content\MI201109210084_1\m3u8s\	segment_0.ts	Downloaded
9	https://bitdash-a.akamaihd.net/content/MI201109210084_1/m3u8s/./video/270_4000...	content\MI201109210084_1\m3u8s\	segment_0.ts	Downloaded
10	https://bitdash-a.akamaihd.net/content/MI201109210084_1/m3u8s/./video/360_8000...	content\MI201109210084_1\m3u8s\	segment_0.ts	Downloaded
11	https://bitdash-a.akamaihd.net/content/MI201109210084_1/m3u8s/./video/540_1200...	content\MI201109210084_1\m3u8s\	segment_0.ts	Downloaded
12	https://bitdash-a.akamaihd.net/content/MI201109210084_1/m3u8s/./video/720_2400...	content\MI201109210084_1\m3u8s\	segment_0.ts	Downloaded
13	https://bitdash-a.akamaihd.net/content/MI201109210084_1/m3u8s/./video/1080_480...	content\MI201109210084_1\m3u8s\	segment_0.ts	Downloaded
14	https://bitdash-a.akamaihd.net/content/MI201109210084_1/m3u8s/./video/180_2500...	content\MI201109210084_1\m3u8s\	segment_1.ts	Downloaded
15	https://bitdash-a.akamaihd.net/content/MI201109210084_1/m3u8s/./video/270_4000...	content\MI201109210084_1\m3u8s\	segment_1.ts	Downloaded
16	https://bitdash-a.akamaihd.net/content/MI201109210084_1/m3u8s/./video/360_8000...	content\MI201109210084_1\m3u8s\	segment_1.ts	Downloaded
17	https://bitdash-a.akamaihd.net/content/MI201109210084_1/m3u8s/./video/540_1200...	content\MI201109210084_1\m3u8s\	segment_1.ts	Downloaded
18	https://bitdash-a.akamaihd.net/content/MI201109210084_1/m3u8s/./video/720_2400...	content\MI201109210084_1\m3u8s\	segment_1.ts	Downloaded
19	https://bitdash-a.akamaihd.net/content/MI201109210084_1/m3u8s/./video/1080_480...	content\MI201109210084_1\m3u8s\	segment_1.ts	Downloaded
20	https://bitdash-a.akamaihd.net/content/MI201109210084_1/m3u8s/./video/180_2500...	content\MI201109210084_1\m3u8s\	segment_2.ts	Downloaded
21	https://bitdash-a.akamaihd.net/content/MI201109210084_1/m3u8s/./video/270_4000...	content\MI201109210084_1\m3u8s\	segment_2.ts	Downloaded
22	https://bitdash-a.akamaihd.net/content/MI201109210084_1/m3u8s/./video/360_8000...	content\MI201109210084_1\m3u8s\	segment_2.ts	Downloaded
23	https://bitdash-a.akamaihd.net/content/MI201109210084_1/m3u8s/./video/540_1200...	content\MI201109210084_1\m3u8s\	segment_2.ts	Downloaded
24	https://bitdash-a.akamaihd.net/content/MI201109210084_1/m3u8s/./video/720_2400...	content\MI201109210084_1\m3u8s\	segment_2.ts	Downloaded
25	https://bitdash-a.akamaihd.net/content/MI201109210084_1/m3u8s/./video/1080_480...	content\MI201109210084_1\m3u8s\	segment_2.ts	Downloaded
26	https://bitdash-a.akamaihd.net/content/MI201109210084_1/m3u8s/./video/180_2500...	content\MI201109210084_1\m3u8s\	segment_3.ts	Downloaded

Folder: D:\1\_hls\ Select Folder Stop Close

After selecting a destination folder, using the **Select Folder** button, press **Start** to start the download process. The stream is downloaded in progressive way – first all playlists are downloaded, followed by the first segments from each layer.

The following functions are available from the application **Help** menu.

**Registration** – Opens the product registration form. This function is available only in the full licensed version of the product.

**Check For Updates** – Enables/Disables automatic check for updates.

**About** – Opens the About dialog box of the product.