



ProRes Video ES Viewer User's Guide

LEGAL NOTICE

The information in this manual is furnished for informational use only. No part of this manual may be reproduced or transmitted in any form or by any means, electronic or mechanical, for any purpose, without the prior written permission of Jongbel Media Solutions Ltd.

The software described in this manual is owned by Jongbel Media Solutions Ltd. It is protected by Bulgarian Copyright Law as well as by international copyright treaties and may be used or copied only in accordance with the license agreement.

Jongbel Media Solutions Ltd. provides this manual “as is” without any warranty, either express or implied.

This publication may contain typographical errors or technical inaccuracies. While every precaution has been taken in the preparation of this document, Jongbel Media Solutions Ltd. assumes no responsibility for errors or omissions. Nor is any liability assumed for damages resulting from the use of the information contained herein. Changes are periodically made to the information herein; they will be incorporated in new versions of the manual. Please check the Jongbel Media Solutions website regularly for User Manual updates.

Jongbel Media Solutions Ltd. may introduce changes or improvements in the products described in this manual at any time without any special notice.

Please address your comments or questions to:

Jongbel Media Solutions Ltd.

info@jongbel.com

www.jongbel.com

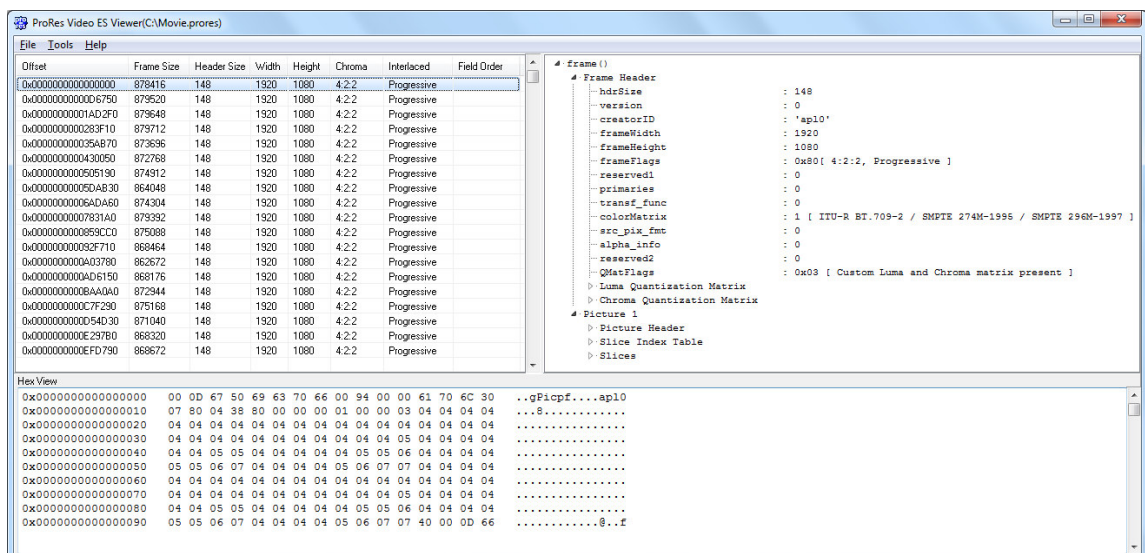
The logo for Jongbel Media Solutions features the word "JONGBEL" in a bold, blue, sans-serif font. The letter "O" is stylized with a yellow and orange circular graphic element. Below "JONGBEL" is the phrase "MEDIA SOLUTIONS" in a smaller, blue, sans-serif font.

TABLE OF CONTENTS

- 1. Overview..... 4
- 1.1 General Features of ProRes Video ES Viewer..... 4
- 1.2 Supported Structures in ProRes Video ES Viewer 5
- 2. Installation..... 5
- 2.1 Installing ProRes Video ES Viewer..... 5
- 2.2 Uninstalling ProRes Video ES Viewer 9
- 3. Functions 9

1. Overview

ProRes Video ES Viewer solution provides a visual representation of the structure of ProRes video elementary stream according to the Apple's ProRes recommendation. The application allows the user to investigate the video frame header, picture header, slice index and each slice header structures. Supported are ProRes 422 High Quality, ProRes 422 Standard Definition, ProRes 422 LT, ProRes 422 Proxy and ProRes 4444 video streams. The solution supports basic HEX data editing of the video frames. The product also supports import from multiplexed MP4 media files.



1.1 General Features of ProRes Video ES Viewer

- Visual representation of ProRes video elementary stream
- ProRes frames list view representation
- ProRes frames tree view representation
- Automatic hex positioning of the selected block
- Hex data representation of the file
- Hex data editing of the selected video frame
- Extraction of selected video frame into a separate file

- ProRes video elementary stream import from MP4 media container

1.2 Supported Structures in ProRes Video ES Viewer

- Frame Header
- Picture Header
- Slice Index Table
- Slice Header

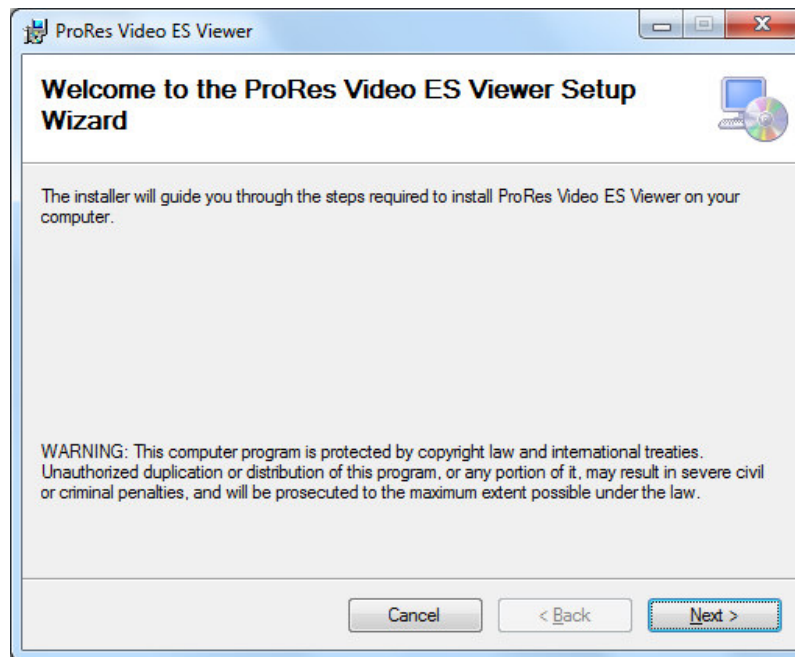
2. Installation

2.1 Installing ProRes Video ES Viewer

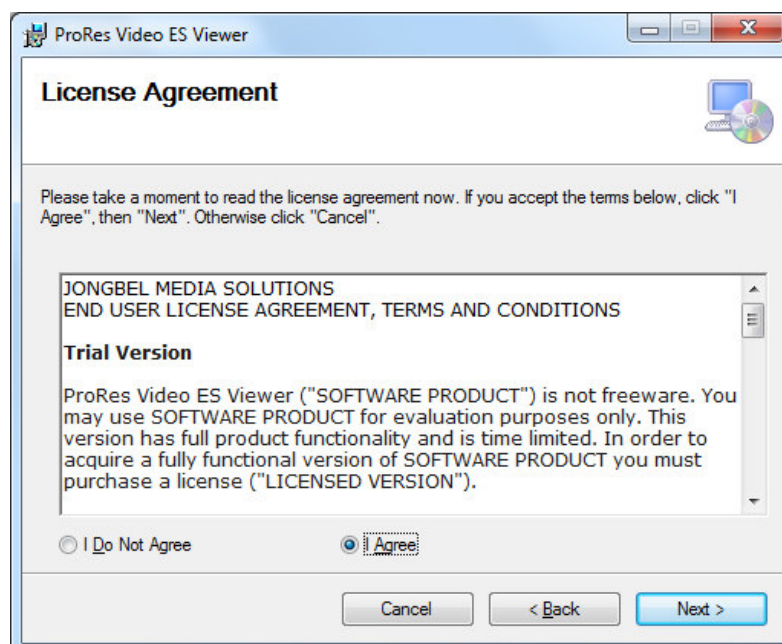
Before installing the **ProRes Video ES Viewer** solution, make sure that any previous version of the product has been uninstalled refer 2.2.

The installation package of **ProRes Video ES Viewer** is distributed in msi file. After downloading the file from the official Jongbel Media Solutions web site – www.jongbel.com, execute the installation by starting the msi file.

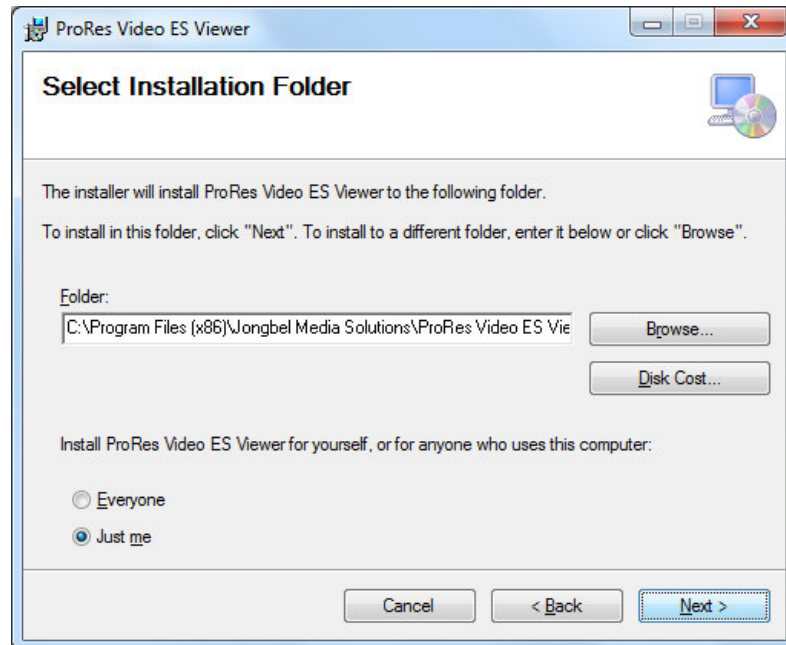
First a Welcome dialog pops up. Click “Next” in order to proceed.



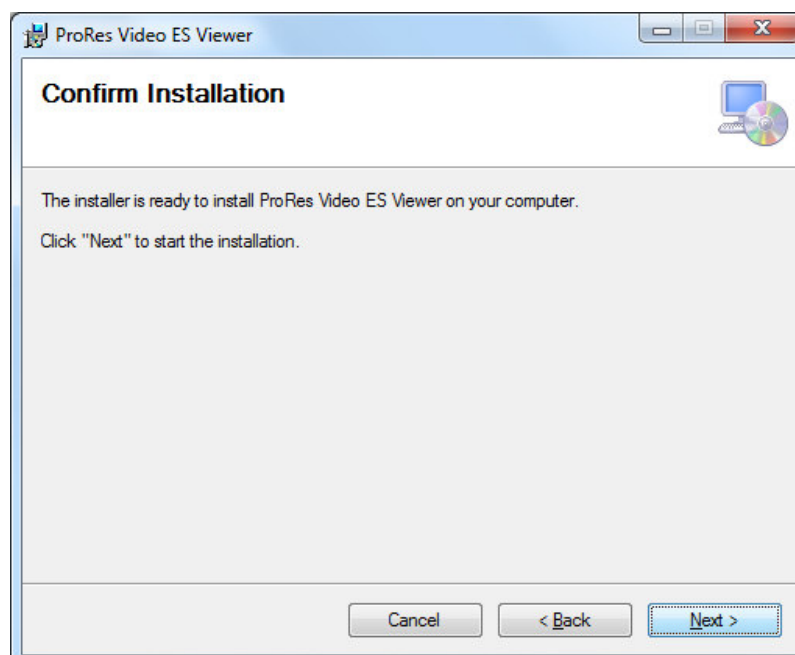
After this a License Agreement dialog pops up. Read the agreement carefully, select "I Agree" if you agree all the terms and click "Next" to proceed.



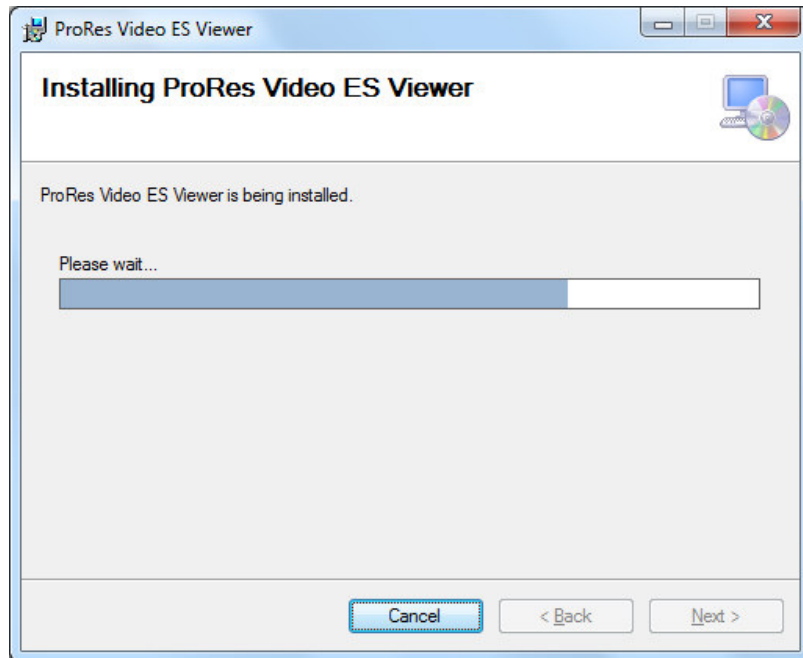
The next window shown specifies the installation product location and user access to the product. Change the destination product folder and user access if needed and click “Next” to proceed.



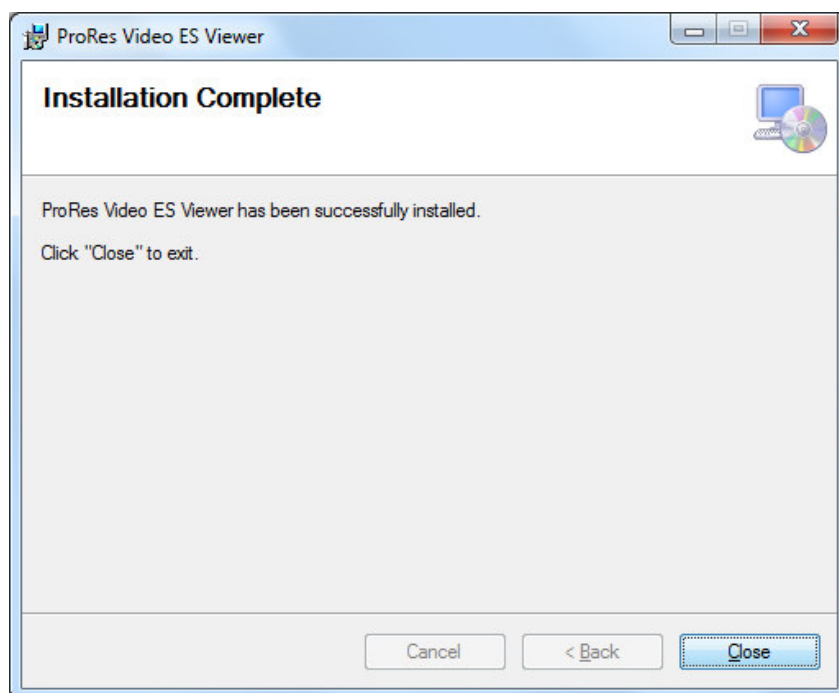
The next dialog is a confirmation dialog. Confirm by clicking “Next” in order to start the installation procedure.



While the product is being installed an “Installing” window shows the installation progress. Wait until the product is being installed.



At the end an “Installation Complete” dialog pops up, which denotes the successful ProRes Video ES Viewer installation. Click “Close” to finalize the process.



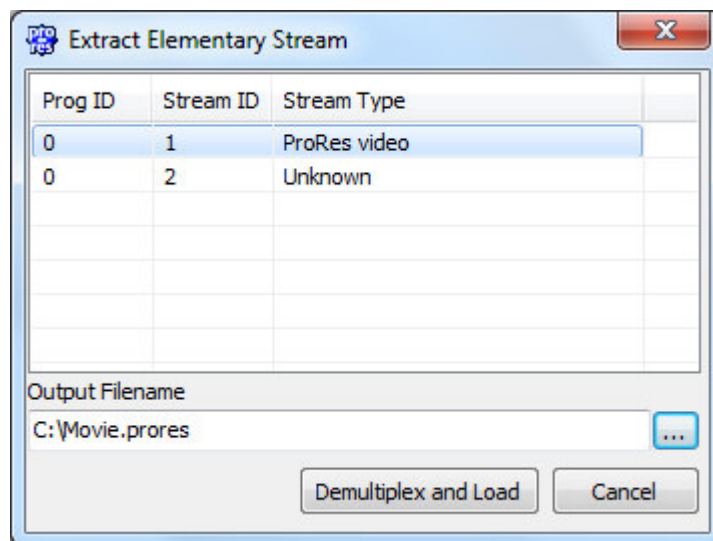
2.2 Uninstalling ProRes Video ES Viewer

The application can be removed opening the Control Panel – Programs and Features. Select the **ProRes Video ES Viewer** application and click Uninstall.

3. Functions

The following functions are available from the application **File** menu.

Open – Opens a file open dialog box for selecting media file for loading. ProRes Video ES Viewer supports ProRes 422 High Quality, ProRes 422 Standard Definition, ProRes 422 LT, ProRes 422 Proxy and ProRes 4444 video elementary streams and MP4 multiplexed ProRes video streams. In case of multiplexed media file loading Extract Elementary Stream dialog opens.



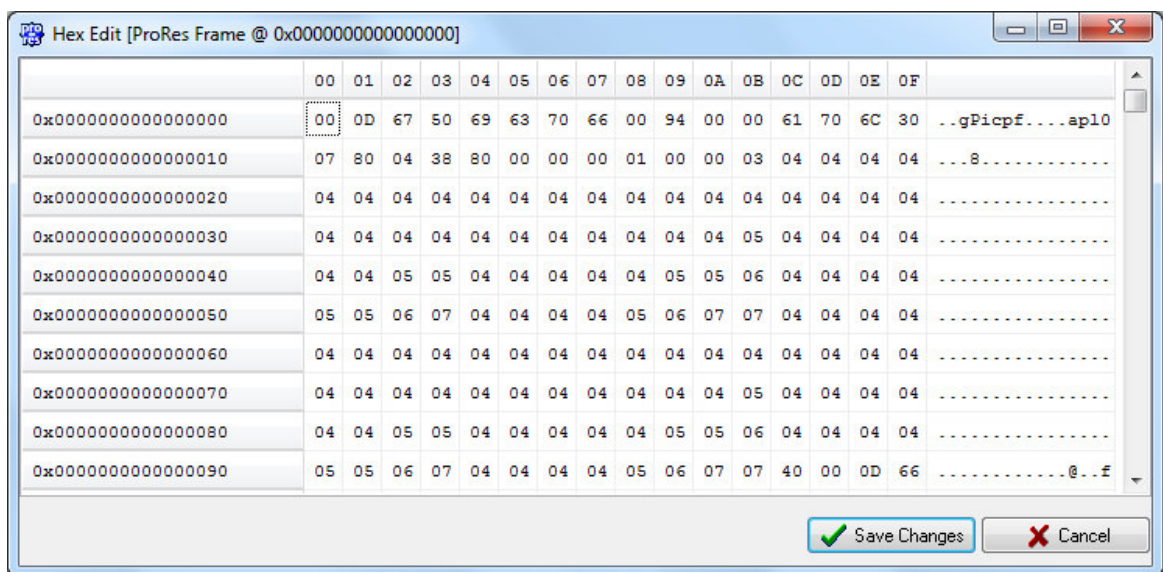
The dialog lists all elementary streams in the selected multiplexed media file with its internal program ID information, stream ID information and elementary stream type. “Output File Name” denotes the output folder and file name which will be used as a destination for the elementary stream demultiplexing. “Demultiplex and Load” button performs the elementary stream extraction and loading into the ProRes Video ES Viewer Pro.

Close – Closes the opened file and clears the tree and hex views.

Exit – Closes the application.

The following functions are available from the application **Tools** menu.

Hex Edit Selected Frame – Opens a Hex Edit dialog box for byte hex manipulating the binary data of the selected video frame from the list view.



By double-clicking on the byte cell, the form will enter into byte editing mode, making it possible to change the value of the selected byte cell. The byte cells with values different from the values of the original file are marked in red. **Save Changes** button will save the altered bytes to the original file. **Cancel** button will exit the form, without altering the original file.

Extract Selected Frame – Extracts the selected video frame from the list view into a separate file. A Save File dialog box is opened for selecting the destination file name.

Extracting separate video frame of one media file, enables easy transfer for further manipulation or examination of the essential header part of the media file.

The following functions are available from the application **Help** menu.

Registration – Opens the product registration form. This function is available only in the full licensed version of the product.

Check For Updates – Enables/Disables automatic check for updates.

About – Opens the About dialog box of the product.